



EliteScan T1000

3D-

EliteScan T1000

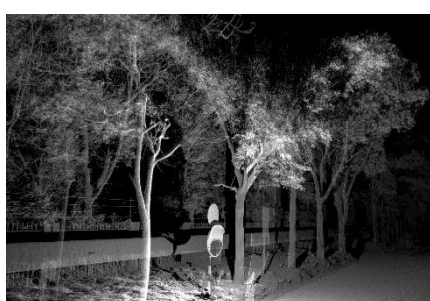
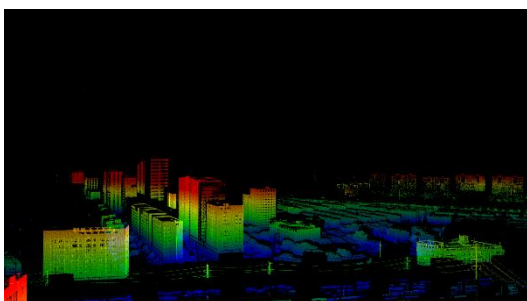
3D-



1500

5
100

SDK



EliteScan T1000 SYSTEM PARAMETER

SYSTEM PARAMETER		≤7kg
		205× 192x 68
		18~33
		<50W
		GigE
		-20°C~+60°C
		-30°C~+65°C
		±5°
LASER SCANNING UNIT		
		1
		1000
		≥1000 @R=20%
		1.5
		≤5 @100
		100° (-40°~+60°)
		360°
		: 15-120 / . : .15°/ .
		≤0.001°

*



Wuhan Eleph-Print Tech Co.Ltd

Web: <https://en.epiclidar.cn/>

E-mail: marketing@epiclidar.cn

Add: Room 701,7/F,Block B,Huishang Building, #2 Wudayuan Road,Wuhan East Lake High-Tech Development Zone Wuhan,Hubei,P.R.China

